

# **user guide**

## **Logger**

trijekt GmbH  
Wielandstr. 3  
D-57482 Wenden  
Phone: +49(0)2762-98825-0  
Fax: +49(0)2762-98825-29  
e-mail: [info@trijekt.de](mailto:info@trijekt.de)  
[www.trijekt.de](http://www.trijekt.de)



## Index

	Page
1    Logger.....	4
1.1    Logging via PC.....	4
1.2    Logging via Loggerbox.....	7
1.3    Logging via internal flash memory.....	9

## 1. Logger

### 1.1 Logging via PC

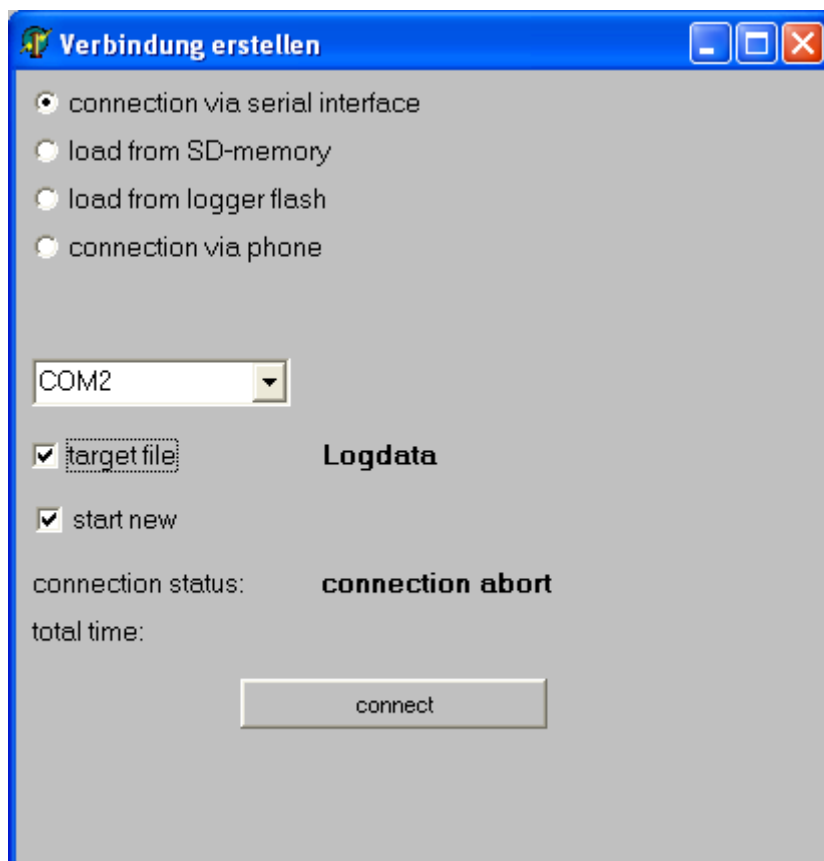
The Datalogger is an independent Program, enabling you to record all **trijekt** data. This program alleviates the adjustment while driving the vehicle, since you can keep on concentrating your attention on the road traffic and view all operating ranges unhurriedly afterwards.

Basically, the Datalogger logs all data sent by **trijekt**, regardless of which data you want to be displayed during recording.

The Program is to be found on the delivered CD. You can also download it from „Service“ on our Homepage. For Installation simply run File „Setup.exe“ and follow the further program instructions.

In order to be able to establish a connection between the Datalogger and **trijekt** Win trijekt must not have any connection to the **trijekt** Control Unit! (i. e. either close Win trijekt or remove the checkmark at „online on“.)

Now click “Connection” in the program, select the required adjustments and click button „connect“.



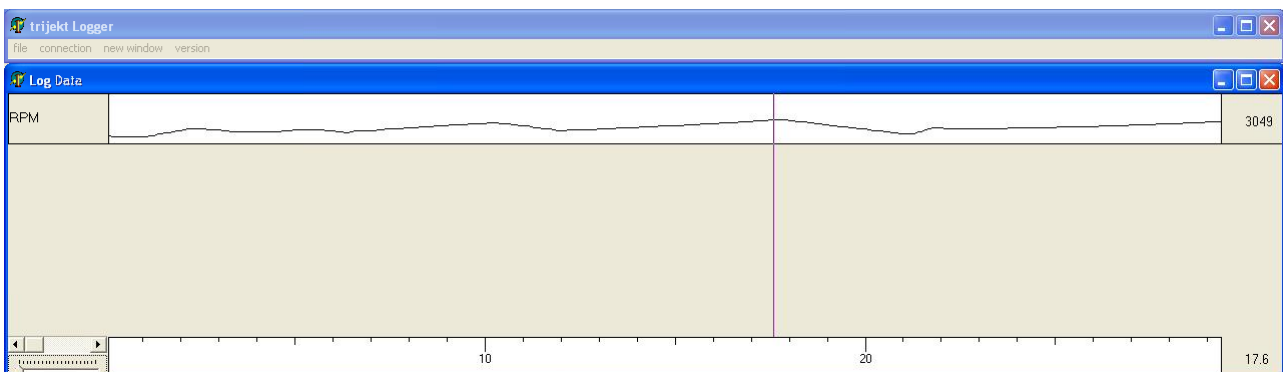
## 1. Logger

Now all data sent by **trijekt** are recorded until you interrupt the connection by pressing the button „abort“.



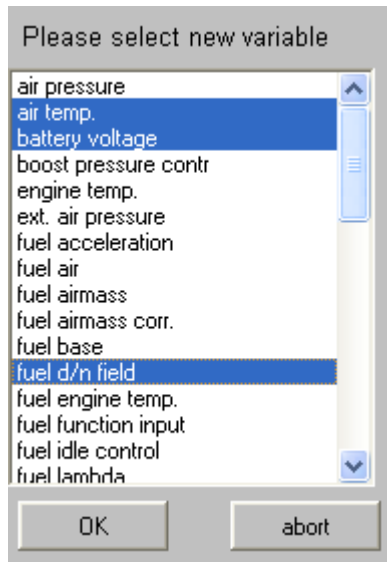
In Menu Window „File“ the File recorded can now be saved at a freely selectable place under a freely selectable name in order to be able to load it into the Logger again later, if required.

Clicking the time bar a vertical line appears which you can move to any requested operating point. On the right is indicated the respective value of the selected array (here e.g. Speed and Time).

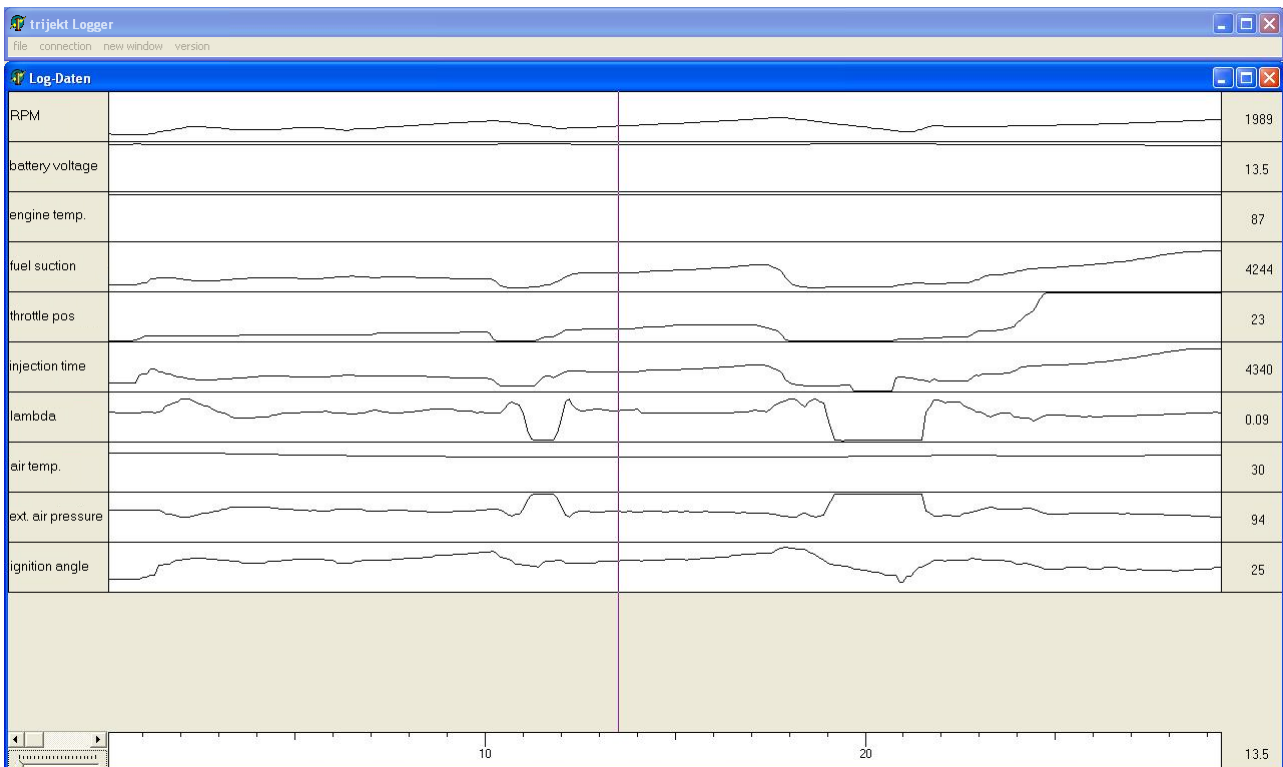


## 1. Logger

After a right click in the grey array a Menu appears in which you can add further arrays, delete or adjust further settings. If you want to see more than only one variable, you have to select them while pressing "Ctrl".



Enlarging or maximizing the window „Log Data“ it is possible to inspect numerous values at a glance.



## 1. Logger

### 1.2 Logging via Data Logger Box

The Data Logger Box is an independent Hardware enabling you to record the complete **trijekt** data. You can purchase it at "Avisaro AG" ([www.avisaro.com](http://www.avisaro.com)) under the name „Datenloggerbox SD“ and the article number M21133.

The data are recorded on a customary SD-card making the whole system extremely insensitive to shocks.

The Memory Requirements are about 4MB/hour, so that on a 1GB SD-Card about 250 hours could be recorded non-stop.

On the one hand this Data Logger Box makes it much easier to adjust motor-bikes and other vehicles with extremely low efficiency weight during driving, since you can keep on concentrating your attention on the road traffic and view all operating ranges unhurriedly afterwards. Furthermore, due to its small size and due to the fact that it is extremely insensitive to shocks, the Data Logger Box is ideally suited for recording complete races and evaluating them afterwards.

Connecting between Data Logger Box and **trijekt** is provided by the included null modem cable. Voltage supply is 5-30V, so that it can be fed either by the 12V voltage supply of the vehicle, or by a customary 9V battery (service life abt. 2 hours) alternatively.

In order to configure the Data Logger Box for **trijekt** two files have to be copied to the SD-card: „autorun.txt“ and „trijekt2.txt“. You find these files on our Homepage under "Downloads". When the Box is energized and the SD-card with both Files is inserted, these Files are transmitted to the box within a second automatically and run at next reboot of Box.

The Box is now completely configured for **trijekt** and, if required, the two Files can be deleted from the SDcard.

The green LED indicates operational readiness of the Data Logger Box

Data recording is started by pressing the start button on the box.

The red LED indicates current recording.

Recording is stopped by pressing the start button again.

Alternatively, recording can be finished by removing the SD-card or by switching off ignition.

When recording again, a new file is started.

The Log Data are arranged in the respective files.

Data1.TDC  
Data2.TDC  
etc. to  
Data999.TDC

The number of the last file is saved in file „Logno.DAT“.

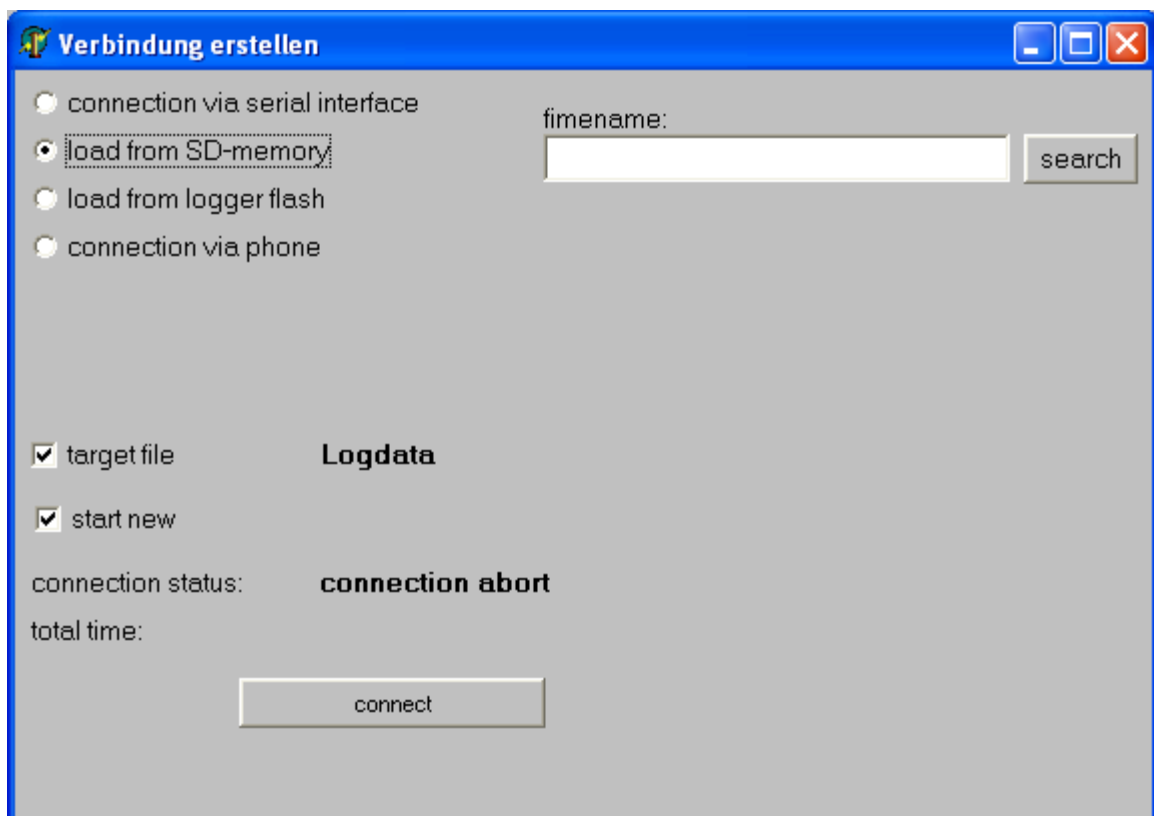
In case that file numbering shall start with "1" again, file „Logno.DAT“ has to be deleted.

## 1. Logger

The Data Logger Box creates the File „Data1.TDC“ on the SD-card that can be read in and evaluated after recording over the known Datalogger.

For reading the File „ Data1.TDC “ please insert the SD-card in a suitable SD-card reader on your computer and start the program „Datalogger“.

Under point „Connection“ you can now select „load from SD-memory“.  
Over the button „search“ you can now select the corresponding file on the Chip-card.



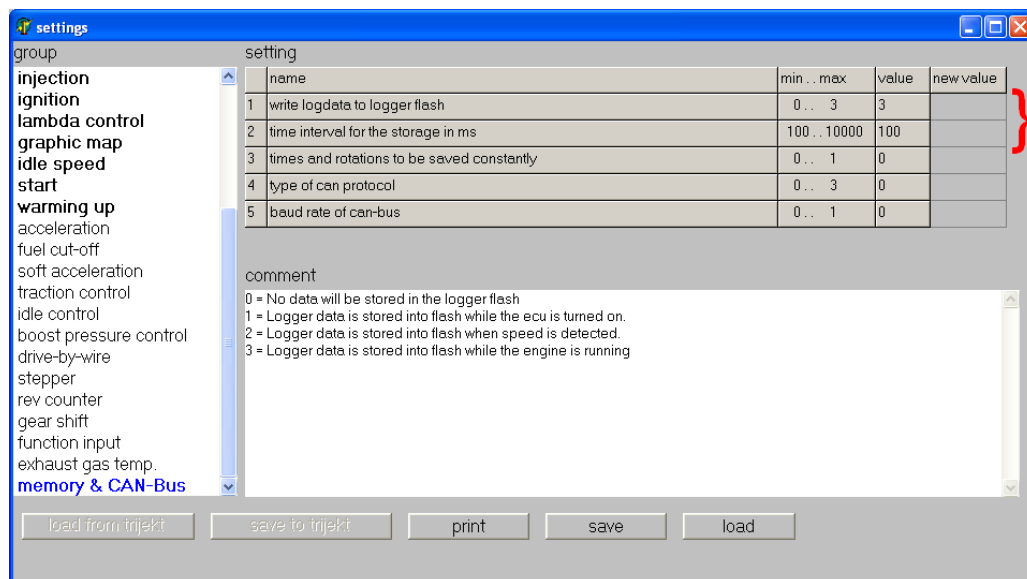
Now click the button „connect“.  
The data are read in within a few seconds and can be evaluated.



## 1. Logger

### 1.3 Logging via internal flash memory

ECUs with internal logger flash memory (eg, **trijekt** bee and **trijekt** premium) can record data directly, without the need for a PC or an external device. To do this, the feature must be activated in the settings (in the PC program win trijekt) under "memory & CAN-Bus":



settings  
for the internal  
logger

#### Attention!

If the recording starts when the ECU is switched on (value = 1), the time interval must not be shorter than 1000ms (1 second), because the recording is also running during the reading of the memory.

#### Each new record is appended to the previous data.

Please take a look at the maximum recording time, to lose no data!

The maximum recording time is:

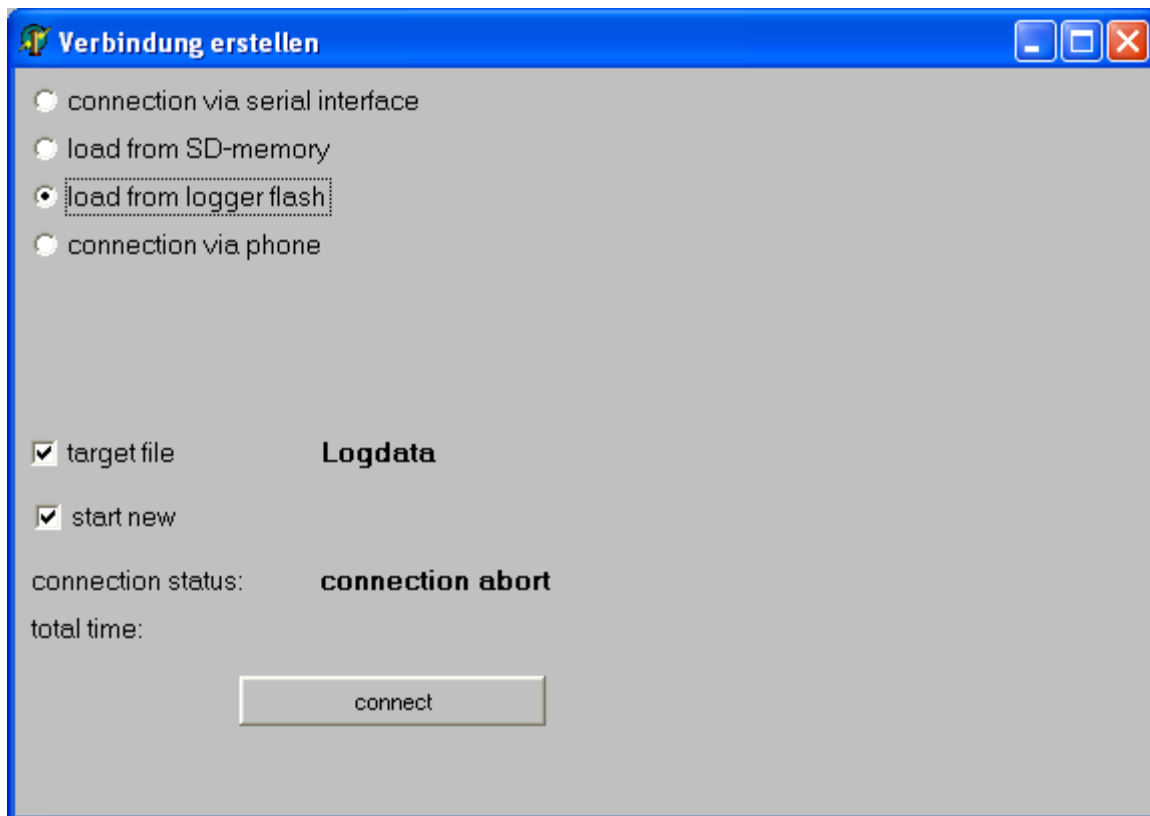
time interval	max. recording time
20 (0,02s)	10min
100 (0,1s)	45min
200 (0,2s)	1,5h
500 (0,5s)	4h
1000 (1s)	8h
2000 (2s)	15h
5000 (5s)	40h
10000 (10s)	80h
60000 (1min)	200d

(standard)

## 1. Logger

### load from logger flash

Under point „connection“ you can select „load from logger flash“.

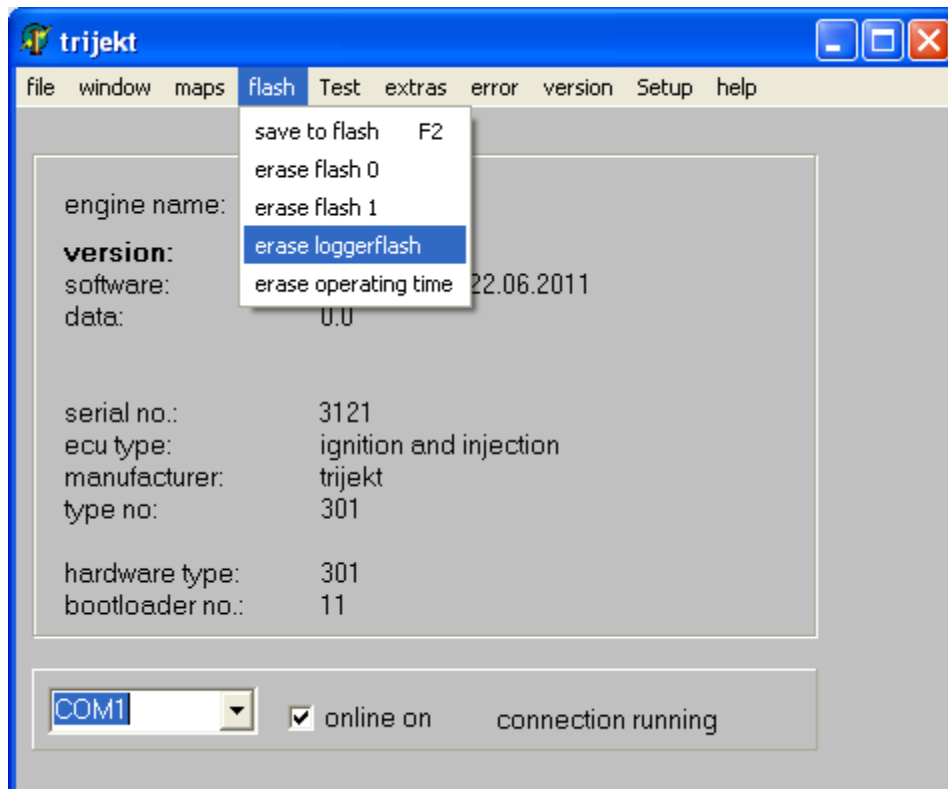


Now click the button „connect“.  
The program will read the data.  
Then you can evaluate the data like after a “Log via PC”.

## 1. Logger

### delete logger flash

To delete the recorded data, start the PC program "win trijekt" and select "delete logger flash":



The deletion of the memory can take up to 4minutes

